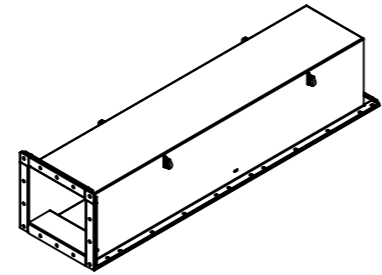
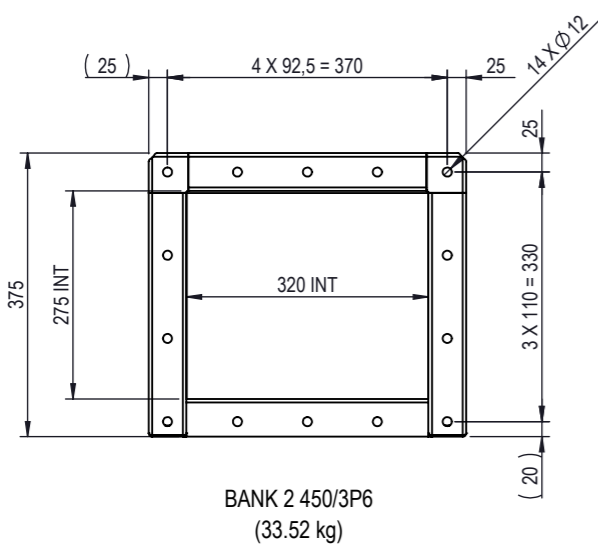
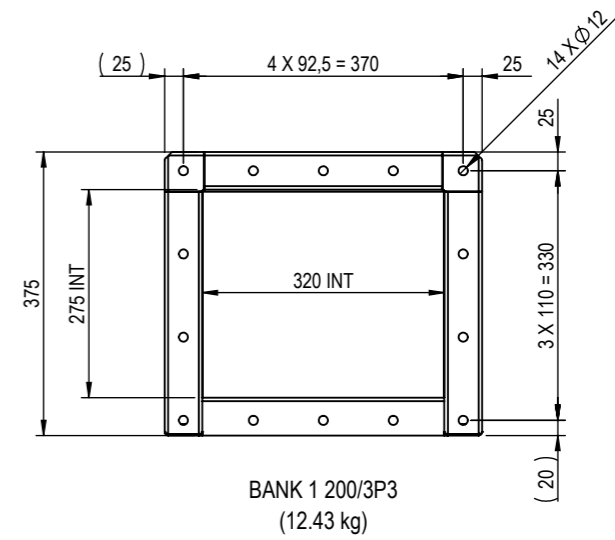
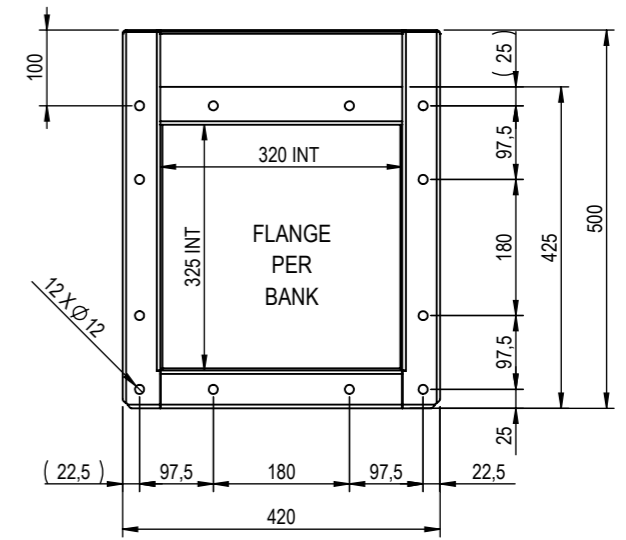
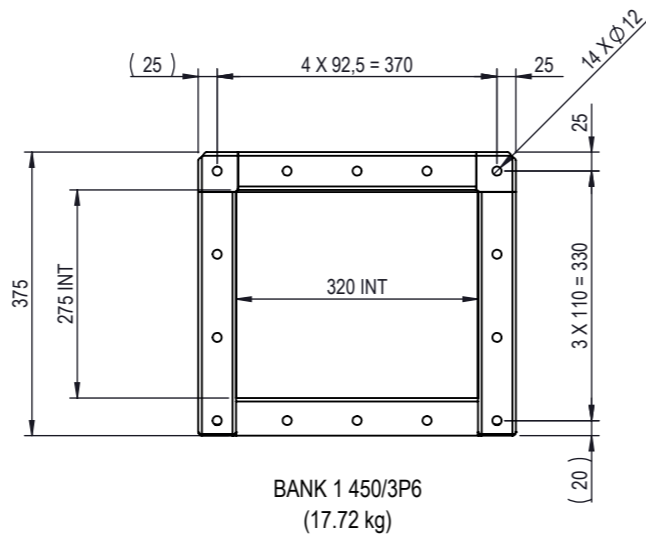
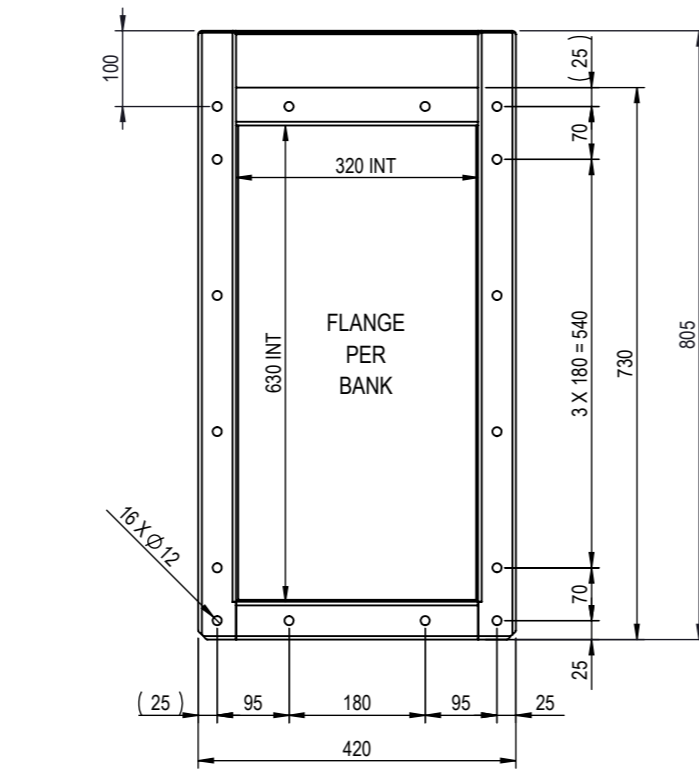
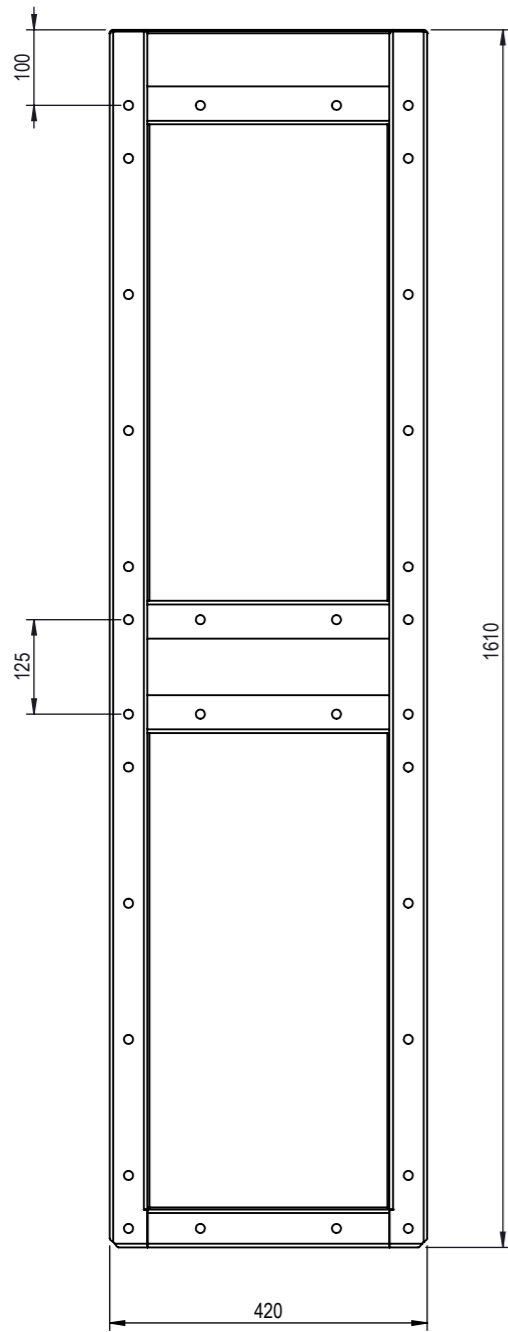


1 2 3 4 5 6 7 8

REV.	CHANGE	DATE	DESIGNED	APPROVED
I	ITEM NUMBERS CHANGED	20.08.2021	RIL	VPA

A  
B  
C  
D  
E  
F

A  
B  
C  
D  
E  
F



CAMSAFE COLLECTOR									
Version		BANK 1 200/3P3		BANK 1 450/3P6		BANK 2 450/3P6			
Size	5249-1050-111		5349-1050-111		5349-1250-111				
Material / Finish	Painted *	316L *	304L *	Painted *	316L *	304L *	Painted *	316L *	304L *
Item No.	1072697	1072701	1072699	1072596	1072600	1072598	1072602	1072606	1072604
Material	SHEETMETAL - EN10025-2 - S235JR(G2) (1.0038)		SHEETMETAL 316L - EN10088-2 - X2CrNiMo17-12-2-2B (1.4404)		SHEETMETAL 304L - EN10088 - X2CrNi18-09 (1.4307)				
Finish	Painted RAL 9010 SPEC025		Pickled & Glass Blasted SPEC026		Pickled & Glass Blasted SPEC026				

General tolerances ISO 2768 - vL unless otherwise specified	
DIMENSION	TOLERANCE
< 30	± 1
> 30 to 120	± 1,5
> 120 to 400	± 2,5
> 400 to 1000	± 4
> 1000 to 4000	± 6
> 4000	± 8
Break sharp angles 0,5 to 2	

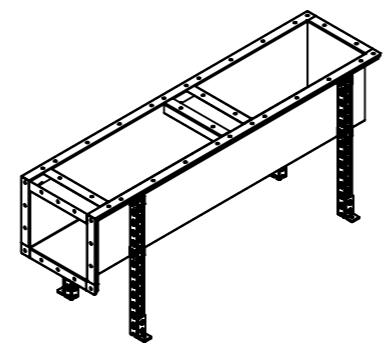
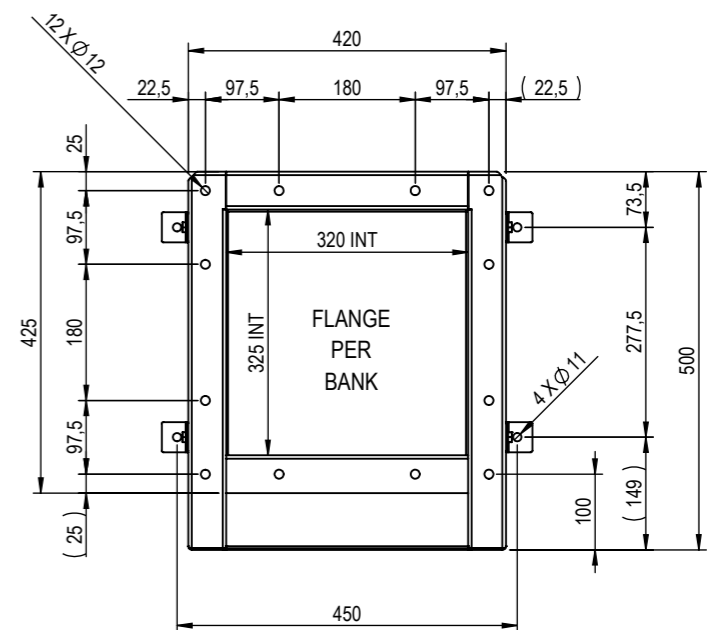
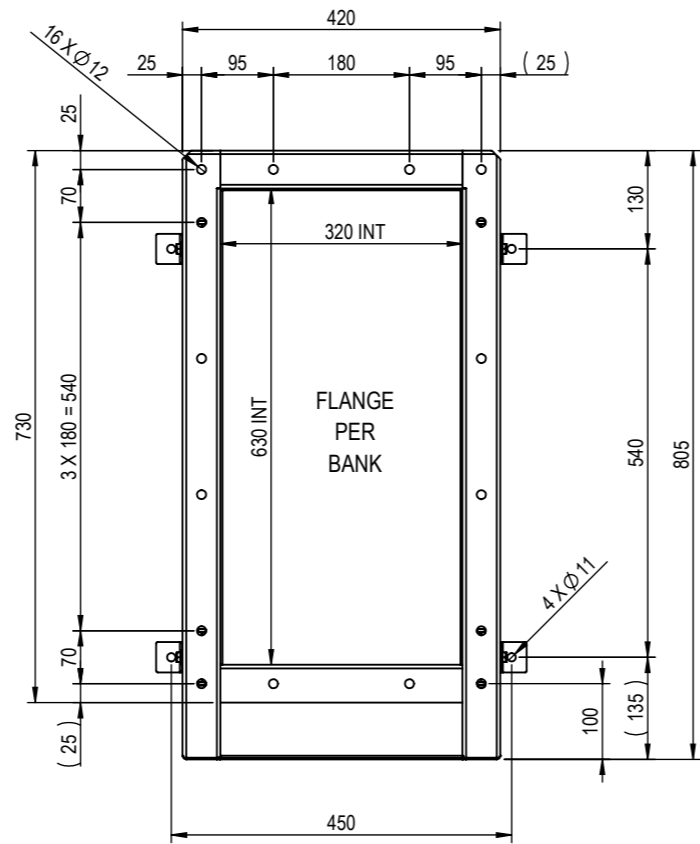
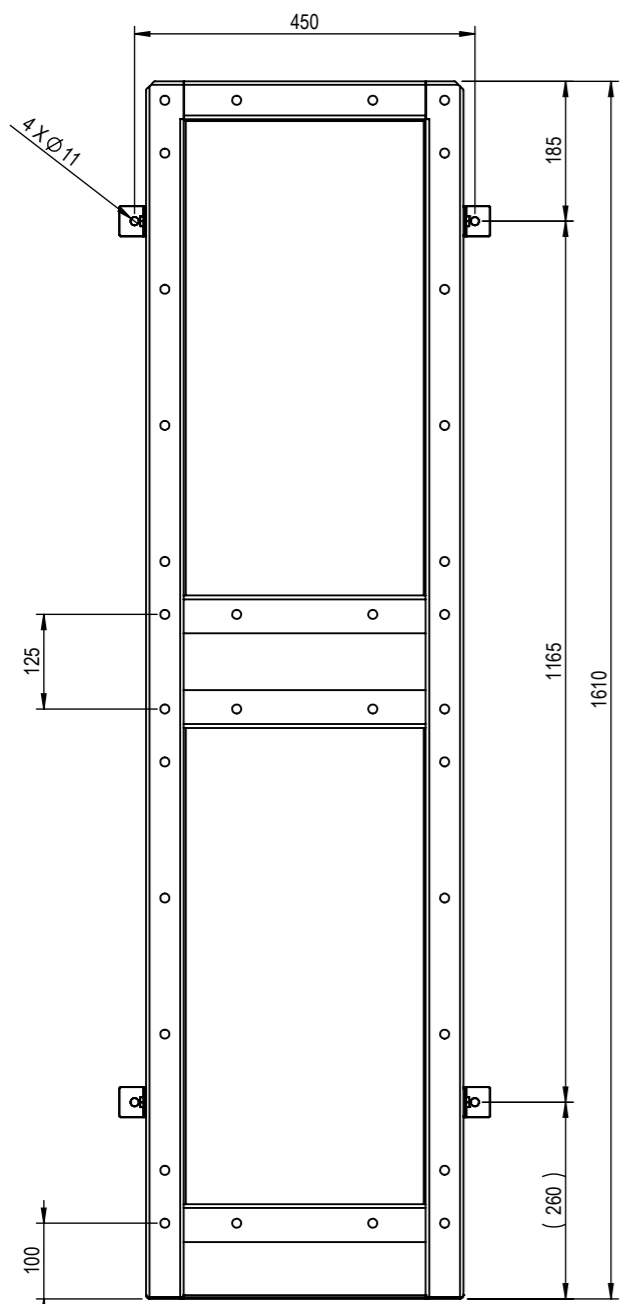
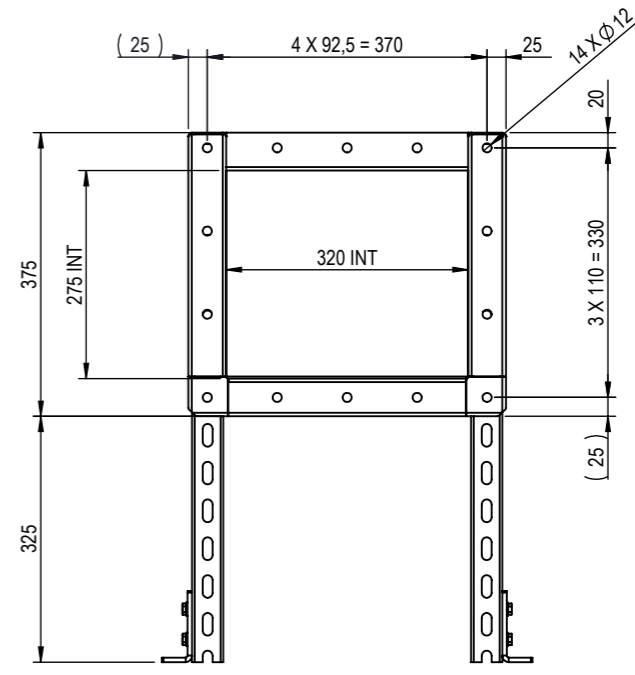
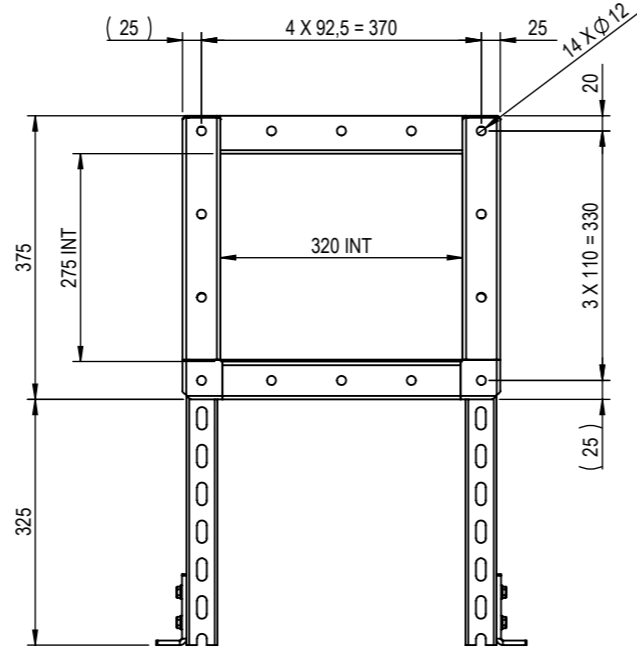
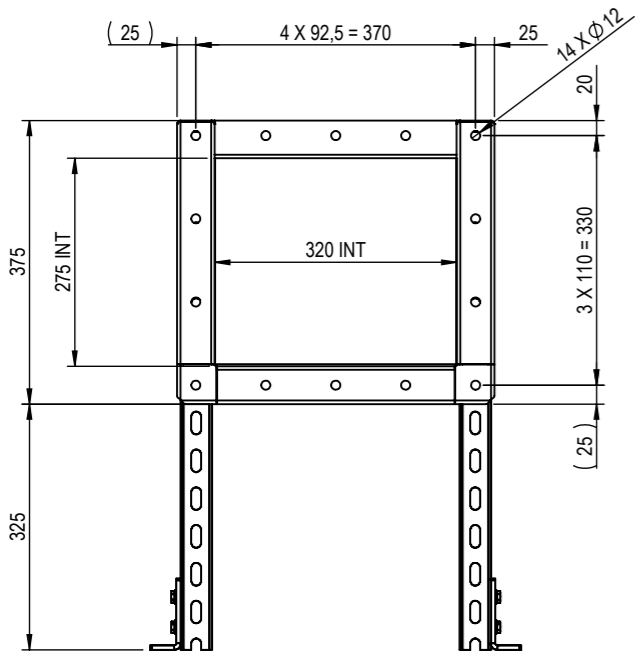


DESCRIPTION			
CamSafe 2 STD COLLECTOR SCOPE			
TOP COLLECTORS 200/3P3 - 450/3P6			
PROJECT	LAST REVISION	WEIGHT	
-	20.08.2021	see drw.	
DRAWING REF.	SHEET	SIZE	SCALE
5349-0000-107 rev.I	1/8	A3	1:10

NB: The copyright of this drawing remains with Camfil. Contents must not be used, copied or disclosed to third parties without prior written consent. All rights reserved.

1 2 3 4 5 6 7 8

NB: The copyright of this drawing remains with Camfil.  
 Contents must not be used, copied or disclosed to  
 third parties without prior written consent.  
 All rights reserved.



BANK 450/3P6  
(52.53 kg)

BANK 1 450/3P6  
(27.39 kg)

BANK 1 200/3P3  
(22.09 kg)

REV.	CHANGE	DATE	DESIGNED	APPROVED
I	ITEM NUMBERS CHANGED	20.08.2021	RIL	VPA

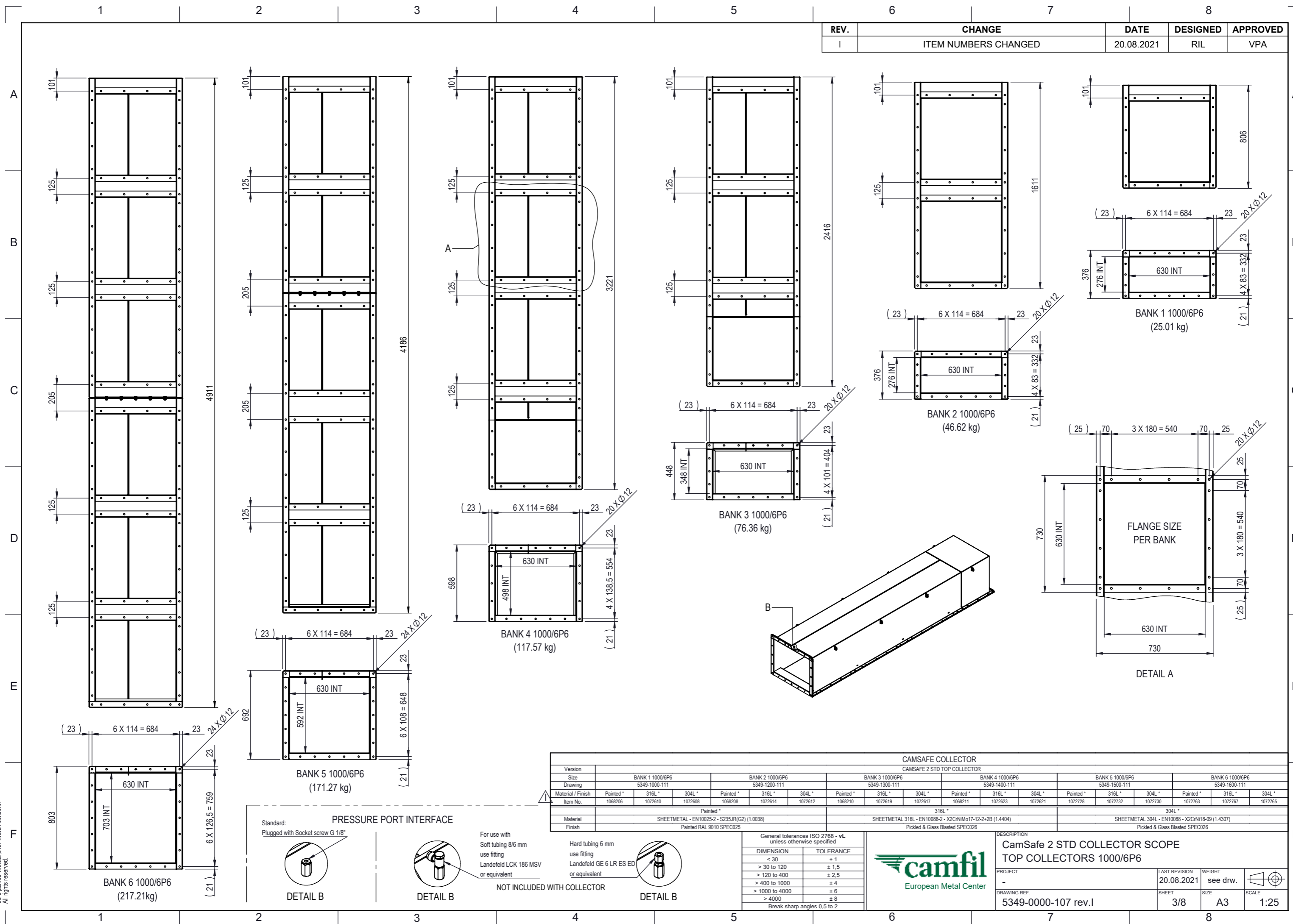
CAMSAFE COLLECTOR						
Version		BANK 1 200/3P3			BANK 1 450/3P6	
Size		5249-1050-011			5349-1250-011	
Drawing		316L * 304L *			316L * 304L *	
Material / Finish		Painted * 1072698 316L * 1072702 304L * 1072700			Painted * 1072597 316L * 1072599 304L * 1072603	
Item No.		Painted * 1072698 316L * 1072702 304L * 1072700			Painted * 1072597 316L * 1072599 304L * 1072603	
Material		SHEETMETAL - EN10025-2 - S235JR(G2) (1.0038)			SHEETMETAL 316L - EN10088-2 - X2CrNiMo17-12-2+2B (1.4404)	
Finish		Painted RAL 9010 SPEC025			Pickled & Glass Blasted SPEC026	

General tolerances ISO 2768 - vL unless otherwise specified	
DIMENSION	TOLERANCE
< 30	± 1
> 30 to 120	± 1,5
> 120 to 400	± 2,5
> 400 to 1000	± 4
> 1000 to 4000	± 6
> 4000	± 8
Break sharp angles 0,5 to 2	



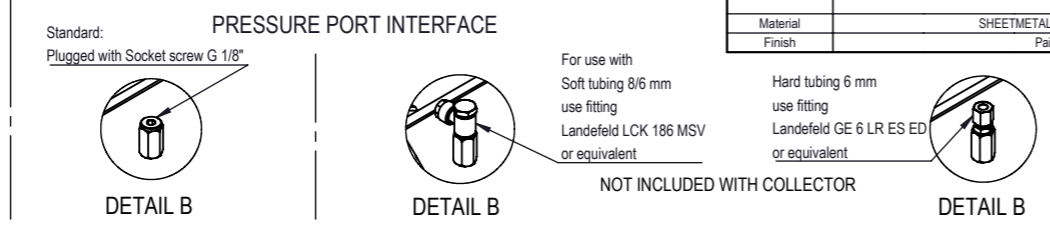
DESCRIPTION			
CamSafe 2 STD COLLECTOR SCOPE BOTTOM COLLECTORS 200/3P3 - 450/3P6			
PROJECT	LAST REVISION	WEIGHT	
-	20.08.2021	see drw.	
DRAWING REF.	SHEET	SIZE	SCALE
5349-0000-107 rev.I	2/8	A3	1:10

REV.	CHANGE	DATE	DESIGNED	APPROVED
I	ITEM NUMBERS CHANGED	20.08.2021	RIL	VPA

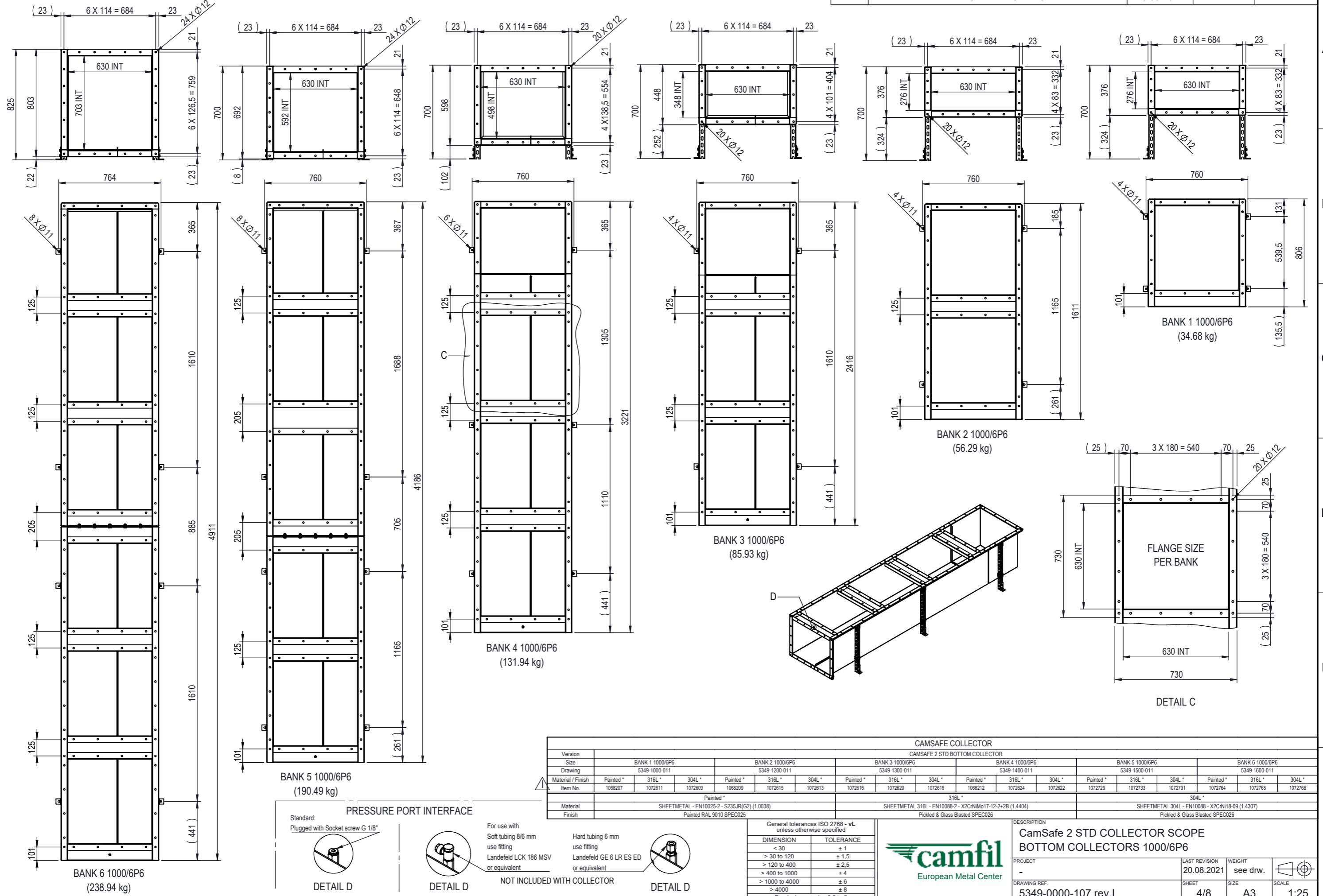


NB: The copyright of this drawing remains with Camfil.  
 Contents must not be used, copied or disclosed to  
 third parties without prior written consent.  
 All rights reserved.

CAMSAFE COLLECTOR																													
CAMSAFE 2 STD TOP COLLECTOR																													
Version	BANK 1 1000/6P6		BANK 2 1000/6P6		BANK 3 1000/6P6		BANK 4 1000/6P6		BANK 5 1000/6P6		BANK 6 1000/6P6																		
Size	5349-1000-111		5349-1200-111		5349-1300-111		5349-1400-111		5349-1500-111		5349-1600-111																		
Drawing	1068206		1072610		1072614		1072617		1072623		1072763																		
Material / Finish	Painted *	316L *	304L *	Painted *	316L *	304L *	Painted *	316L *	304L *	Painted *	316L *	304L *																	
Item No.	1068206	1072610	1072608	1068208	1072614	1072612	1068210	1072619	1072617	1068211	1072623	1072621																	
Material	SHEETMETAL - EN10025-2 - S235JR(G2) (1.0038)						SHEETMETAL 316L - EN10088-2 - X2CrNiMo17-12-2 (1.4404)			SHEETMETAL 304L - EN10088 - X2CrNi18-09 (1.4307)																			
Finish	Painted RAL 9010 SPEC025						316L * Pickled & Glass Blasted SPEC026			304L * Pickled & Glass Blasted SPEC026																			
<table border="1"> <thead> <tr> <th colspan="2">General tolerances ISO 2768 - vL unless otherwise specified</th> </tr> <tr> <th>DIMENSION</th> <th>TOLERANCE</th> </tr> </thead> <tbody> <tr> <td>&lt; 30</td> <td>± 1</td> </tr> <tr> <td>&gt; 30 to 120</td> <td>± 1,5</td> </tr> <tr> <td>&gt; 120 to 400</td> <td>± 2,5</td> </tr> <tr> <td>&gt; 400 to 1000</td> <td>± 4</td> </tr> <tr> <td>&gt; 1000 to 4000</td> <td>± 6</td> </tr> <tr> <td>&gt; 4000</td> <td>± 8</td> </tr> <tr> <td colspan="2">Break sharp angles 0,5 to 2</td> </tr> </tbody> </table>												General tolerances ISO 2768 - vL unless otherwise specified		DIMENSION	TOLERANCE	< 30	± 1	> 30 to 120	± 1,5	> 120 to 400	± 2,5	> 400 to 1000	± 4	> 1000 to 4000	± 6	> 4000	± 8	Break sharp angles 0,5 to 2	
General tolerances ISO 2768 - vL unless otherwise specified																													
DIMENSION	TOLERANCE																												
< 30	± 1																												
> 30 to 120	± 1,5																												
> 120 to 400	± 2,5																												
> 400 to 1000	± 4																												
> 1000 to 4000	± 6																												
> 4000	± 8																												
Break sharp angles 0,5 to 2																													
<table border="1"> <thead> <tr> <th colspan="2">DESCRIPTION</th> </tr> <tr> <th colspan="2">CamSafe 2 STD COLLECTOR SCOPE TOP COLLECTORS 1000/6P6</th> </tr> <tr> <th>PROJECT</th> <th>LAST REVISION</th> </tr> </thead> <tbody> <tr> <td>-</td> <td>20.08.2021</td> </tr> <tr> <th>WEIGHT</th> <th>SCALE</th> </tr> <tr> <td>see drw.</td> <td>1:25</td> </tr> <tr> <th>DRAWING REF.</th> <th>SHEET</th> </tr> <tr> <td>5349-0000-107 rev.I</td> <td>3/8</td> </tr> </tbody> </table>												DESCRIPTION		CamSafe 2 STD COLLECTOR SCOPE TOP COLLECTORS 1000/6P6		PROJECT	LAST REVISION	-	20.08.2021	WEIGHT	SCALE	see drw.	1:25	DRAWING REF.	SHEET	5349-0000-107 rev.I	3/8		
DESCRIPTION																													
CamSafe 2 STD COLLECTOR SCOPE TOP COLLECTORS 1000/6P6																													
PROJECT	LAST REVISION																												
-	20.08.2021																												
WEIGHT	SCALE																												
see drw.	1:25																												
DRAWING REF.	SHEET																												
5349-0000-107 rev.I	3/8																												



REV.	CHANGE	DATE	DESIGNED	APPROVED
I	ITEM NUMBERS CHANGED	20.08.2021	RIL	VPA



**BANK 5 1000/6P6**  
(190.49 kg)

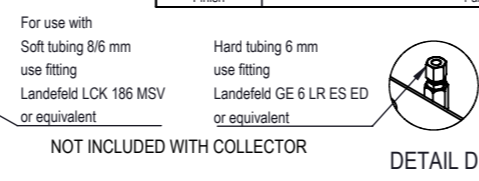
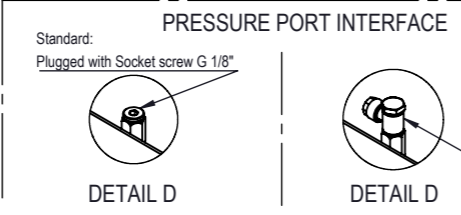
**BANK 4 1000/6P6**  
(131.94 kg)

**BANK 3 1000/6P6**  
(85.93 kg)

**BANK 2 1000/6P6**  
(56.29 kg)

**BANK 1 1000/6P6**  
(34.68 kg)

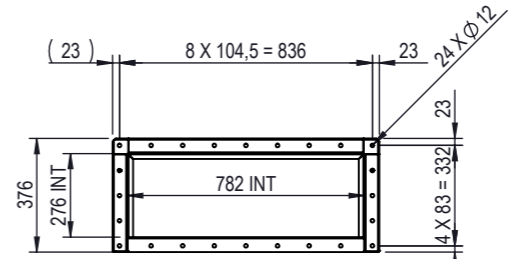
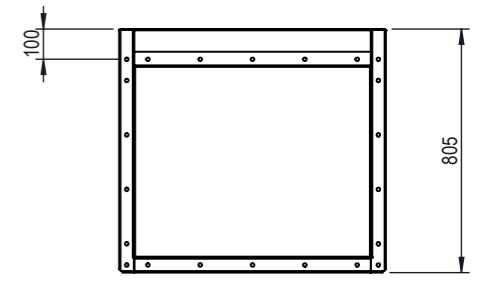
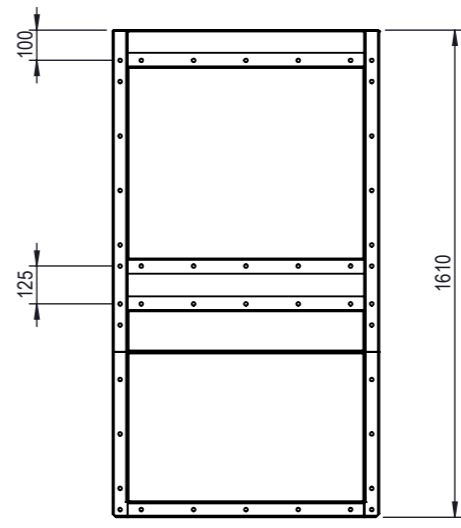
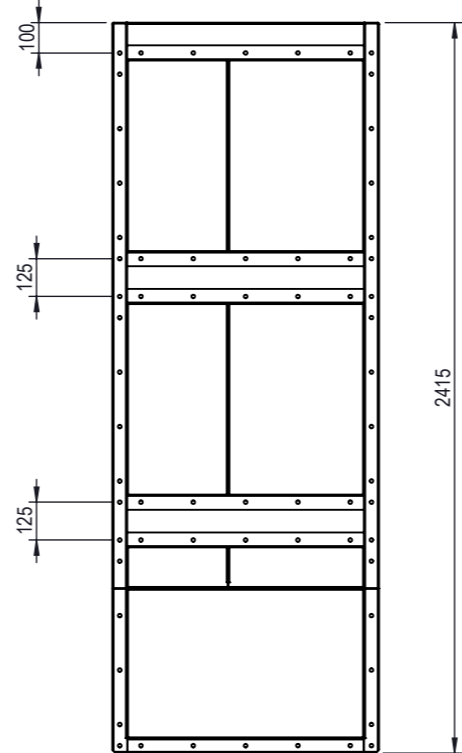
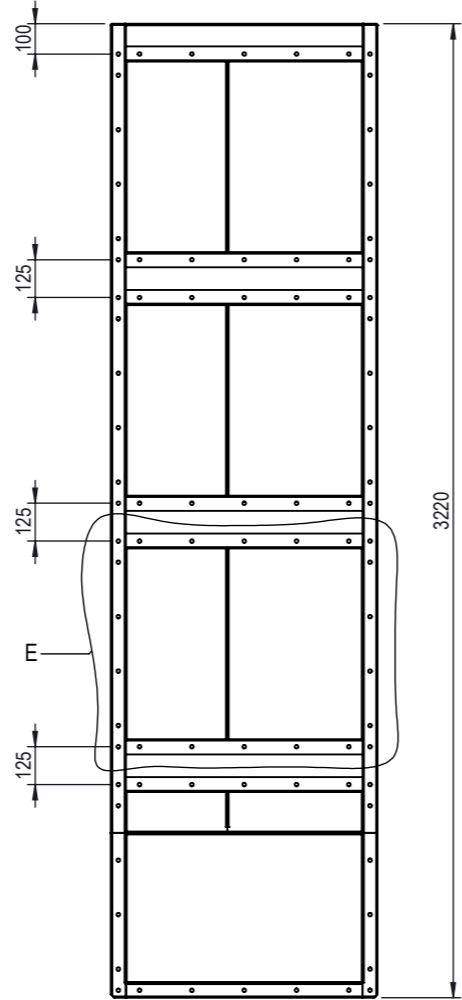
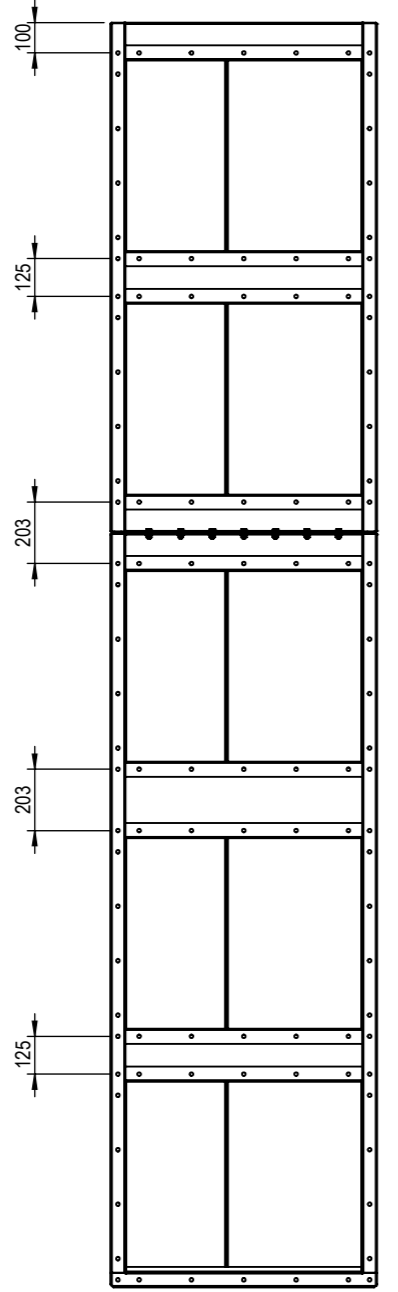
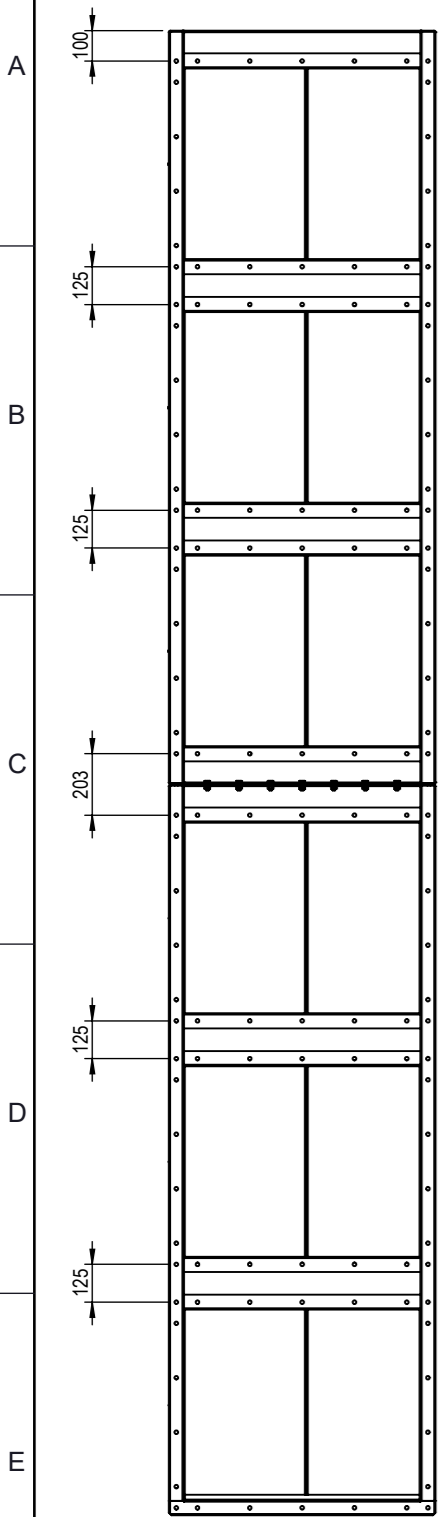
**BANK 6 1000/6P6**  
(238.94 kg)



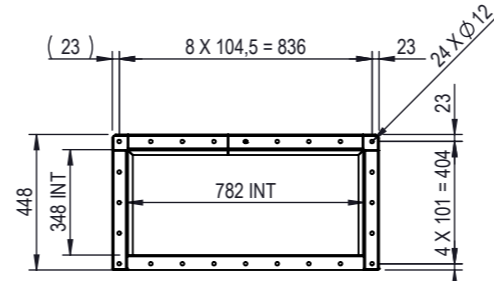
CAMSAFE COLLECTOR																		
CAMSAFE 2 STD BOTTOM COLLECTOR																		
Version	BANK 1 1000/6P6			BANK 2 1000/6P6			BANK 3 1000/6P6			BANK 4 1000/6P6			BANK 5 1000/6P6			BANK 6 1000/6P6		
Size	5349-1000-011			5349-1200-011			5349-1300-011			5349-1400-011			5349-1500-011			5349-1600-011		
Drawing	5349-1000-011			5349-1200-011			5349-1300-011			5349-1400-011			5349-1500-011			5349-1600-011		
Material / Finish	Painted *	316L *	304L *	Painted *	316L *	304L *	Painted *	316L *	304L *	Painted *	316L *	304L *	Painted *	316L *	304L *	Painted *	316L *	304L *
Item No.	1068207	1072611	1072609	1068209	1072615	1072613	1072616	1072620	1072618	1068212	1072624	1072622	1072729	1072733	1072731	1072764	1072768	1072766
Material	SHEETMETAL - EN10025-2 - S235JR(G2) (1.0038)						SHEETMETAL 316L - EN10088-2 - X2CrNiMo17-12-2-2B (1.4404)						SHEETMETAL 304L - EN10088 - X2CrNi18-09 (1.4307)					
Finish	Painted RAL 9010 SPEC025						Pickled & Glass Blasted SPEC026						Pickled & Glass Blasted SPEC026					
DESCRIPTION																		
<b>CamSafe 2 STD COLLECTOR SCOPE</b>																		
<b>BOTTOM COLLECTORS 1000/6P6</b>																		
PROJECT	-			-			-			-			-			-		
LAST REVISION	20.08.2021			-			-			-			-			-		
WEIGHT	see drw.			-			-			-			-			-		
DRAWING REF.	5349-0000-107 rev.I			-			-			-			-			-		
SHEET	4/8			-			-			-			-			-		
SIZE	A3			-			-			-			-			-		
SCALE	1:25			-			-			-			-			-		

NB: The copyright of this drawing remains with Camfil.  
 Contents must not be used, copied or disclosed to  
 third parties without prior written consent.  
 All rights reserved.

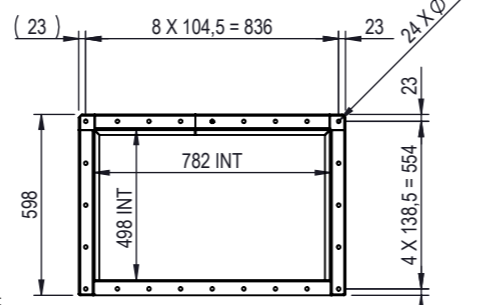
REV.	CHANGE	DATE	DESIGNED	APPROVED
I	ITEM NUMBERS CHANGED	20.08.2021	RIL	VPA



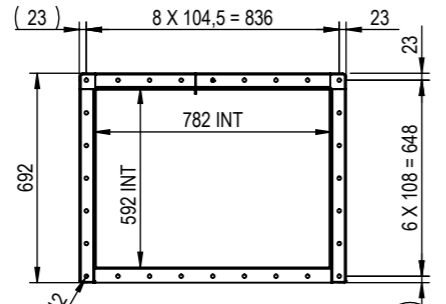
BANK 1 1250/7P6  
(28.53 kg)



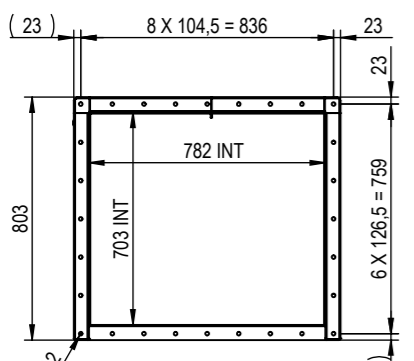
BANK 2 1250/7P6  
(53.67 kg)



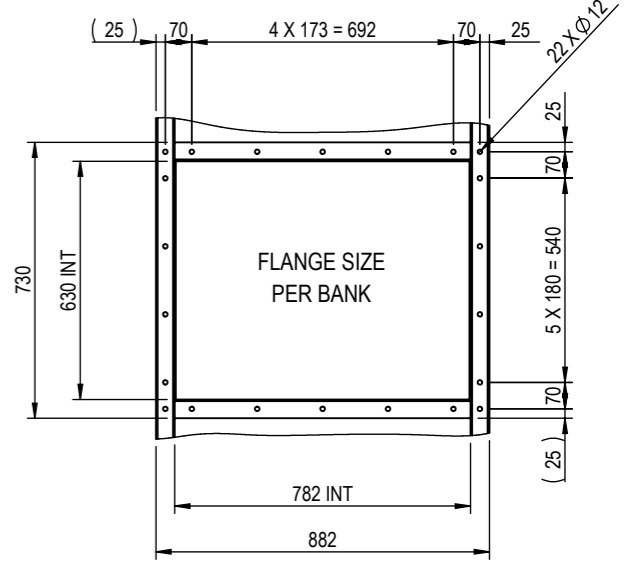
BANK 3 1250/7P6  
(85.78 kg)



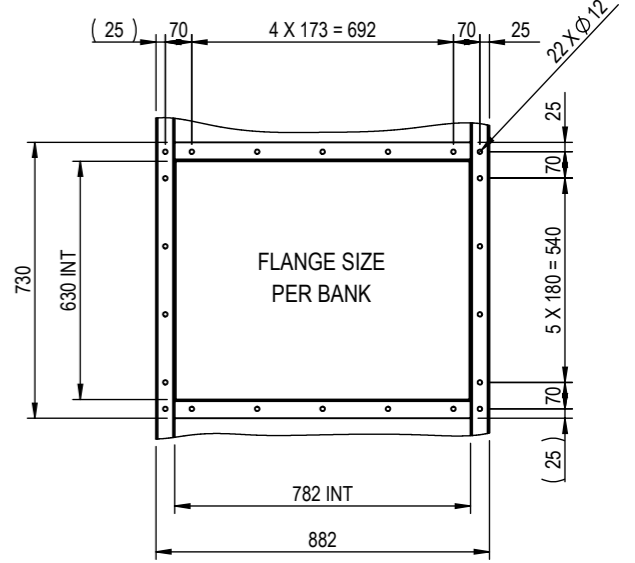
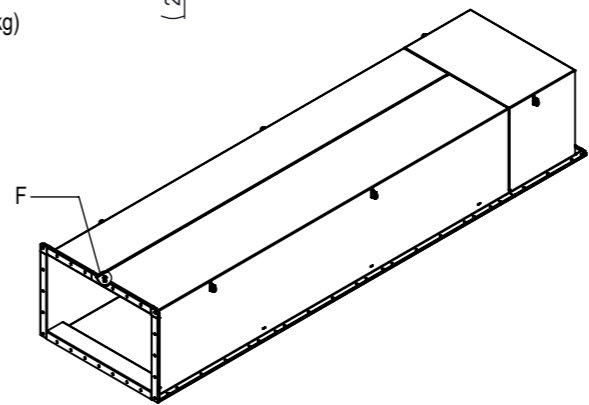
BANK 4 1250/7P6  
(130.03 kg)



BANK 5 1250/7P6  
(188.20 kg)



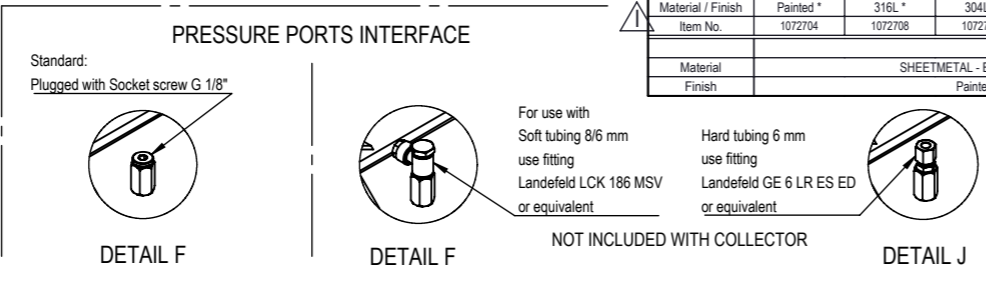
BANK 6 1250/7P6  
(236.94 kg)



FLANGE SIZE  
PER BANK

DETAIL E

CAMSAFE COLLECTOR																		
CAMSAFE 2 STD TOP COLLECTOR																		
Version	BANK 1 1250/7P6			BANK 2 1250/7P6			BANK 3 1250/7P6			BANK 4 1250/7P6			BANK 5 1250/7P6		BANK 6 1250/7P6			
Size	BANK 1 1250/7P6			BANK 2 1250/7P6			BANK 3 1250/7P6			BANK 4 1250/7P6			BANK 5 1250/7P6		BANK 6 1250/7P6			
Drawing	5369-1000-111			5369-1200-111			5369-1300-111			5369-1400-111			5369-1500-111		5369-1600-111			
Material / Finish	Painted *	316L *	304L *	Painted *	316L *	304L *	Painted *	316L *	304L *	Painted *	316L *	304L *	Painted *	316L *	304L *	Painted *	316L *	304L *
Item No.	1072704	1072708	1072710	1072710	1072714	1072712	1072716	1072720	1072718	1072722	1072726	1072724	1072769	1072773	1072771	1072775	1072779	1072777
Material	SHEETMETAL - EN10025-2 - S235JR(G2) (1.0038)						SHEETMETAL 316L - EN10088-2 - X2CrNiMo17-12-2 (1.4404)						SHEETMETAL 304L - EN10088 - X2CrNi18-09 (1.4307)					
Finish	Painted RAL 9010 SPEC025						Painted *						304L *					
	Painted RAL 9010 SPEC025						Pickled & Glass Blasted SPEC026						Pickled & Glass Blasted SPEC026					



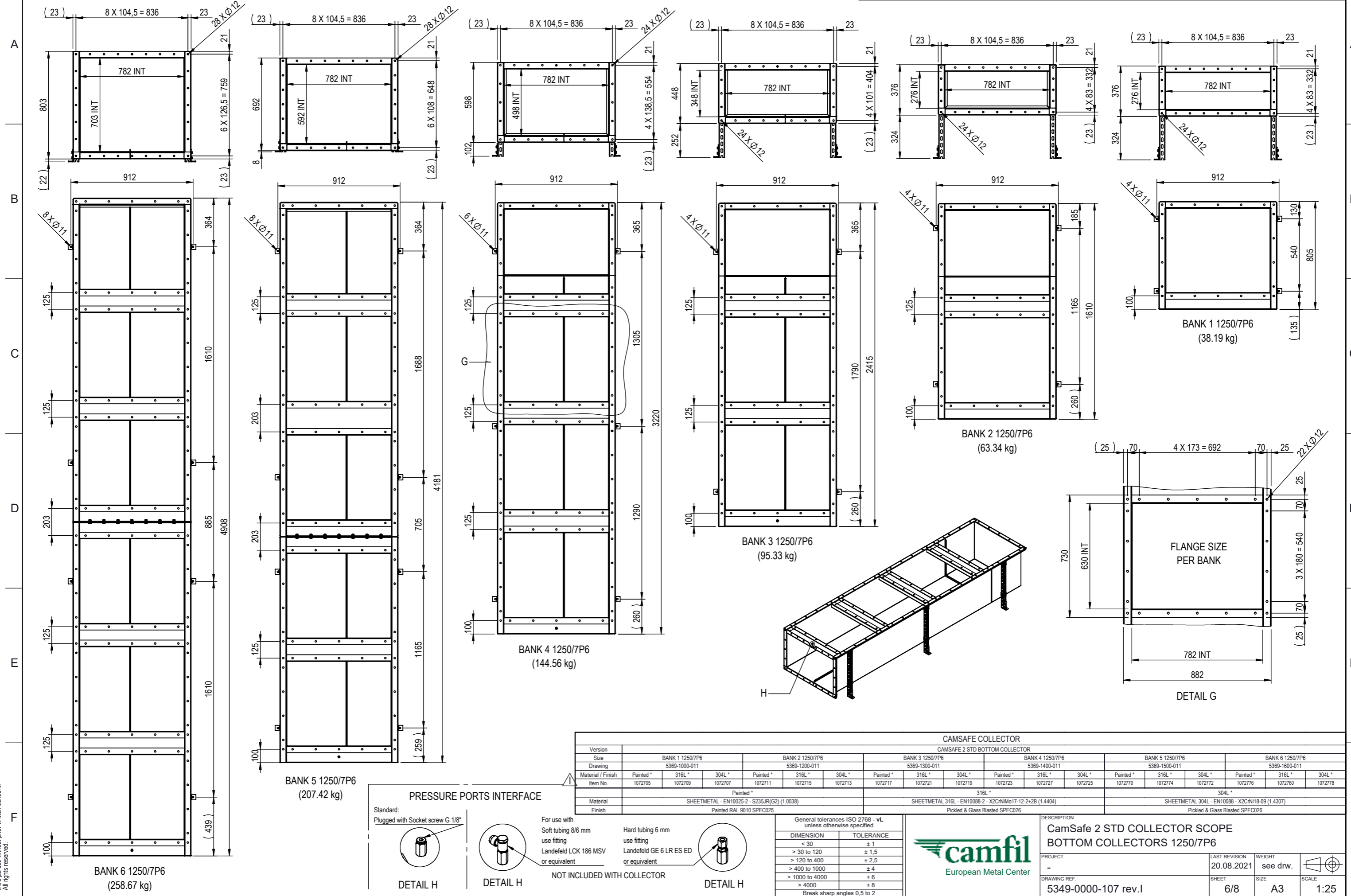
General tolerances ISO 2768 - vL unless otherwise specified	
DIMENSION	TOLERANCE
< 30	± 1
> 30 to 120	± 1,5
> 120 to 400	± 2,5
> 400 to 1000	± 4
> 1000 to 4000	± 6
> 4000	± 8
Break sharp angles 0,5 to 2	



DESCRIPTION			
CamSafe 2 STD COLLECTOR SCOPE TOP COLLECTORS 1250/7P6			
PROJECT	-	LAST REVISION	20.08.2021
WEIGHT	see drw.	SCALE	1:25
DRAWING REF.	5349-0000-107 rev.I	SHEET	5/8
SIZE	A3	DATE	20.08.2021
DESIGNER	RIL	APPROVED	VPA

NB: The copyright of this drawing remains with Camfil. Contents must not be used, copied or disclosed to third parties without prior written consent. All rights reserved.

REV.	CHANGE	DATE	DESIGNED	APPROVED
I	ITEM NUMBERS CHANGED	20.08.2021	RIL	VPA



CAMSAFE COLLECTOR												
CAMSAFE 2 STD BOTTOM COLLECTOR												
Version	BANK 1 1250/7P6		BANK 2 1250/7P6		BANK 3 1250/7P6		BANK 4 1250/7P6		BANK 5 1250/7P6		BANK 6 1250/7P6	
Size	5369-1000-011		5369-1200-011		5369-1300-011		5369-1400-011		5369-1500-011		5369-1600-011	
Drawing	316L *		316L *		316L *		316L *		316L *		316L *	
Material / Finish	Painted *		Painted *		Painted *		Painted *		Painted *		Painted *	
Item No.	1072705	1072709	1072711	1072715	1072713	1072717	1072721	1072719	1072723	1072727	1072725	1072776
Material	SHEETMETAL - EN10025-2 - S235JR(G2) (1.0038)				SHEETMETAL 316L - EN10088-2 - X2CrNiMo17-12-2-2B (1.4404)				SHEETMETAL 304L - EN10088 - X2CrNi18-09 (1.4307)			
Finish	Painted RAL 9010 SPEC025				Pickled & Glass Blasted SPEC026				Pickled & Glass Blasted SPEC026			

General tolerances ISO 2768 - vL unless otherwise specified	
DIMENSION	TOLERANCE
< 30	± 1
> 30 to 120	± 1,5
> 120 to 400	± 2,5
> 400 to 1000	± 4
> 1000 to 4000	± 6
> 4000	± 8
Break sharp angles 0,5 to 2	

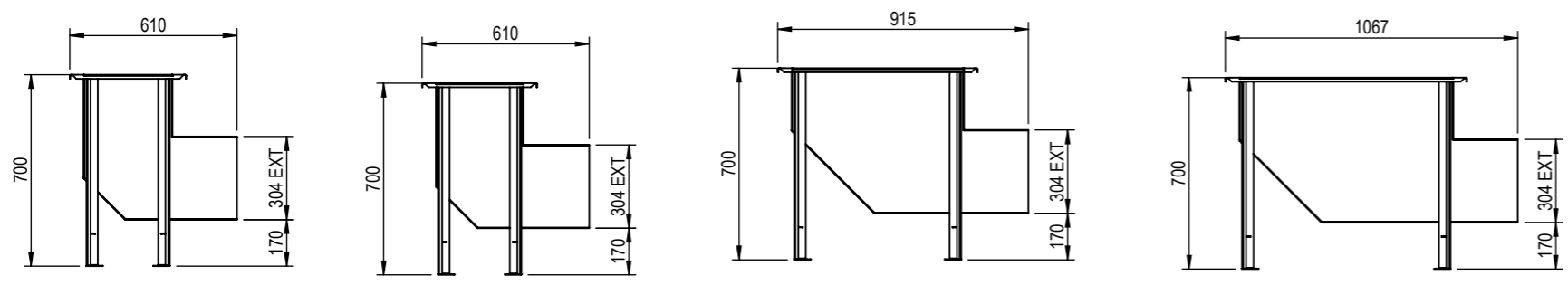
  

DESCRIPTION		
CamSafe 2 STD COLLECTOR SCOPE BOTTOM COLLECTORS 1250/7P6		
PROJECT	LAST REVISION	WEIGHT
-	20.08.2021	see drw.
DRAWING REF.	SHEET	SIZE
5349-0000-107 rev.I	6/8	A3
SCALE		
1:25		

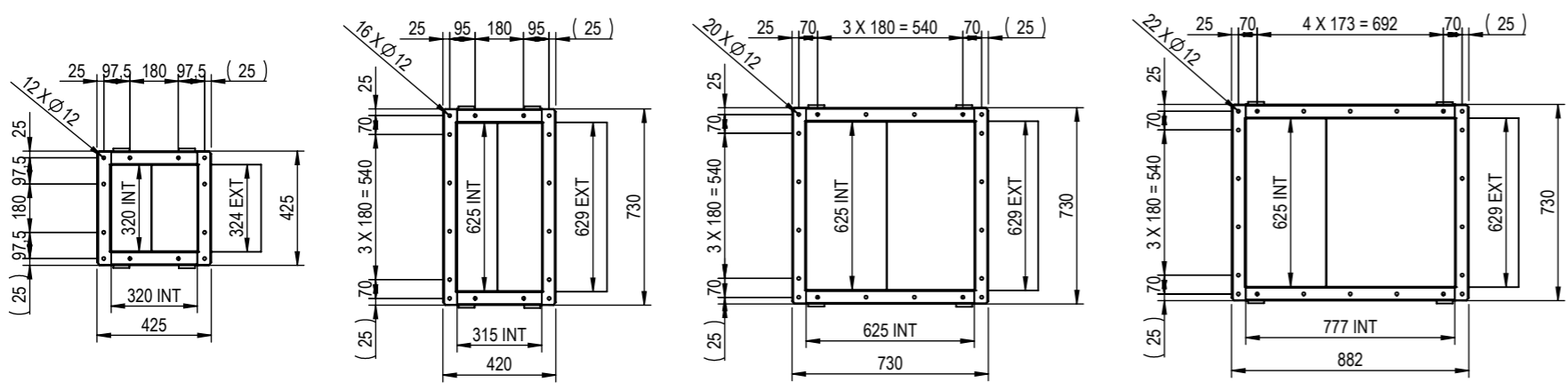
NB: The copyright of this drawing remains with Camfil. Contents must not be used, copied or disclosed to third parties without prior written consent. All rights reserved.

REV.	CHANGE	DATE	DESIGNED	APPROVED
I	ITEM NUMBERS CHANGED	20.08.2021	RIL	VPA

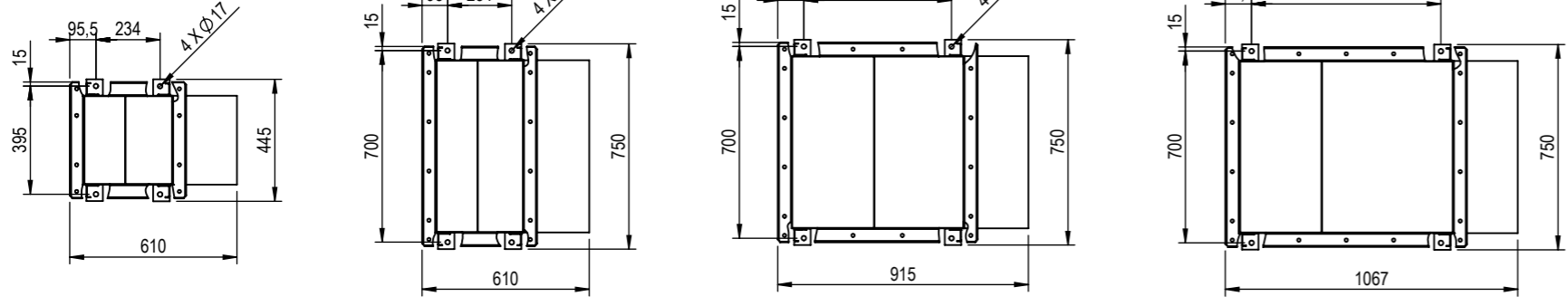
**WALL INLET COLLECTOR**



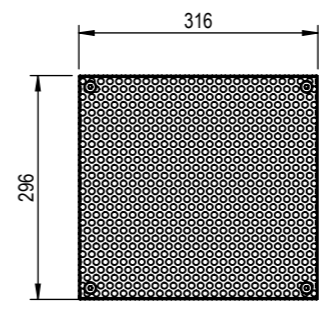
100-200/3P3 (21.75 kg)      450/3P6 (30.25 kg)      1000/6P6 (37.09 kg)      1250/7P6 (41.49 kg)



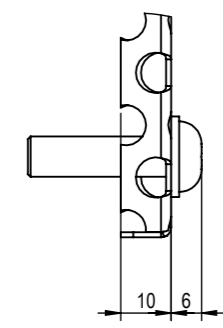
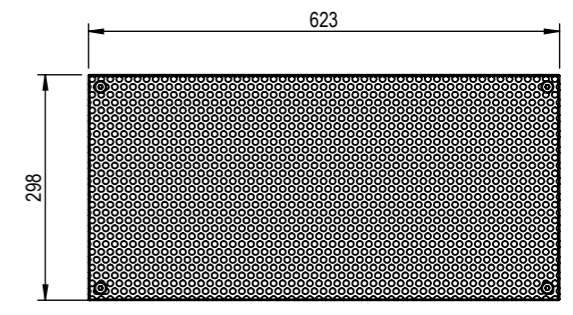
**FOOTPRINT**



**GRID P3**

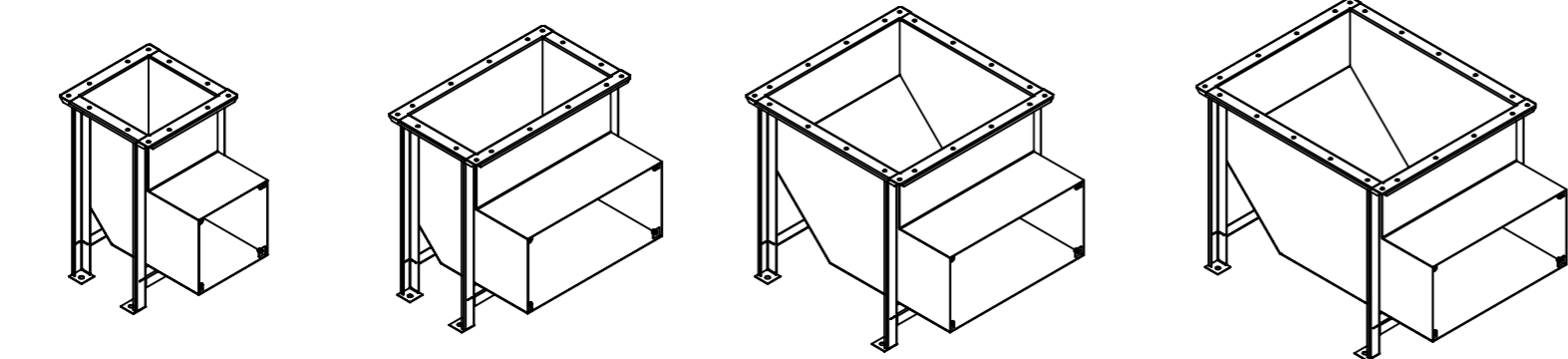
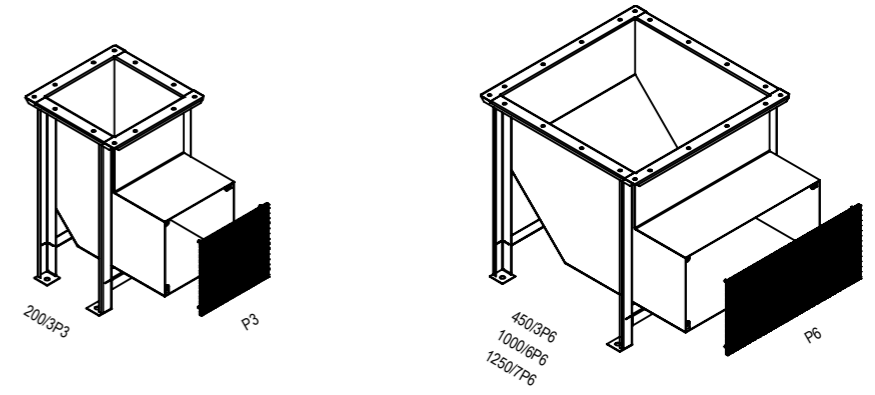


**GRID P6**



DETAIL I

COLLECTOR / GRID TO BE ORDERED SEPARATELY

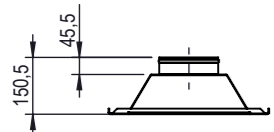


CAMSAFE COLLECTOR										
WALL INLET COLLECTOR 90°										
Version	200/3P3		450/3P6		1000/6P6		1250/7P6			
Size	5399-1120-700		5399-1150-700		5399-1100-700		5399-1100-702			
Drawing	316L * 304L *		316L * 304L *		316L * 304L *		316L * 304L *			
Material / Finish	Painted * 1076836 1076839		Painted * 1076818 1076821		Painted * 1076822 1076825		Painted * 1076824 1076826 1076829 1076828			
Item No.	1076836 1076839		1076818 1076821		1076822 1076825		1076824 1076826 1076829 1076828			
WALL INLET COLLECTOR 90° GRID										
Version	GRID P3		GRID P6							
Size	5399-1120-710		5399-1100-713							
Drawing	316L * 304L *		316L * 304L *							
Material / Finish	Painted * 1077047 1077049		Painted * 1077048 1077050							
Item No.	1077047 1077049		1077048 1077050							
Material	SHEETMETAL - EN10025-2 - S235JR(G2) (1.0038)		SHEETMETAL 316L - EN10088-2 - X2CrNiMo17-12-2 (1.4404)			SHEETMETAL 304L - EN10088 - X2CrNi18-09 (1.4307)				
Finish	Painted RAL 9010 SPEC025		Pickled & Glass Blasted SPEC026			Pickled & Glass Blasted SPEC026				
DESCRIPTION										
CamSafe 2 STD COLLECTOR SCOPE WALL INLET COLLECTOR 90° + GRID										
PROJECT		LAST REVISION		WEIGHT						
-		20.08.2021		see drawing						
DRAWING REF.		SHEET		SIZE		SCALE				
5349-0000-107 rev.I		7/8		A3		1:20				

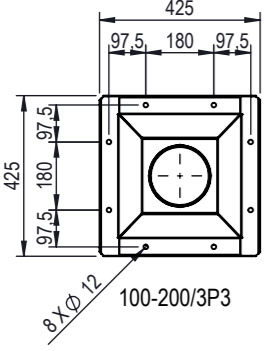
NB: The copyright of this drawing remains with Camfil. Contents must not be used, copied or disclosed to third parties without prior written consent. All rights reserved.



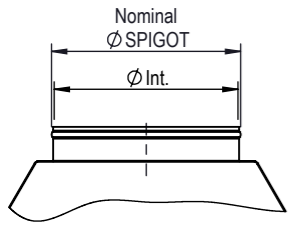
T/B COLLECTOR SPIGOT



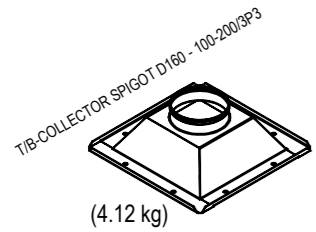
100 / 200



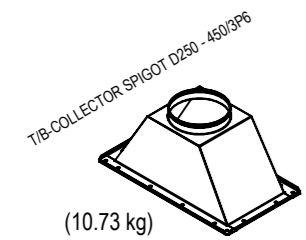
8 X Ø 12  
100-200/3P3



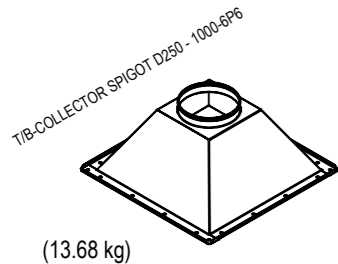
SPIGOT TYPE	DIAMETER	
	Ø Int.	Ø Ext. (Ø Nom.)
Ø 160	153	160
Ø 250	243	250
Ø 315	308	315
Ø 355	348	355
Ø 400	393	400



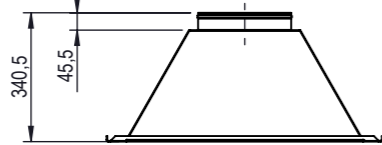
T/B-COLLECTOR SPIGOT DN160 - 100-200/3P3  
(4.12 kg)



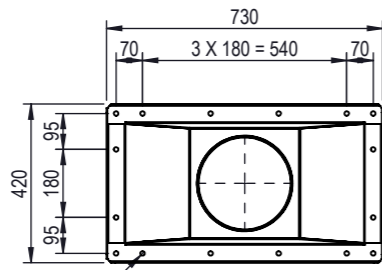
T/B-COLLECTOR SPIGOT DN250 - 450/3P6  
(10.73 kg)



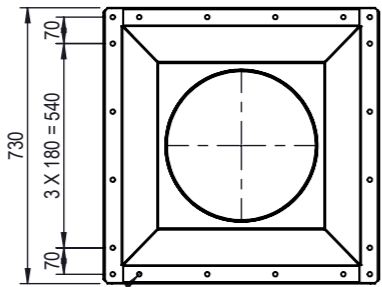
T/B-COLLECTOR SPIGOT DN350 - 1000/6P6  
(13.68 kg)



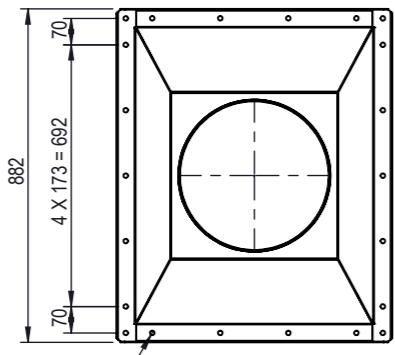
450 / 1000 / 1250



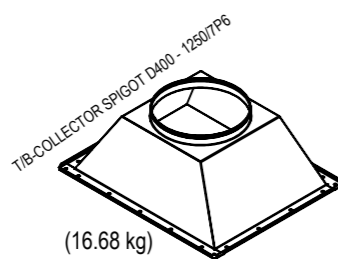
16 X Ø 12  
450/3P6



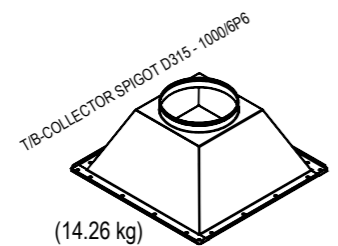
20 X Ø 12  
1000/6P6



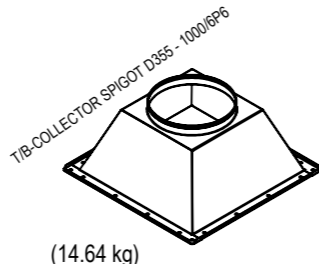
22 X Ø 12  
1250/7P6



T/B-COLLECTOR SPIGOT DN400 - 1250/7P6  
(16.68 kg)

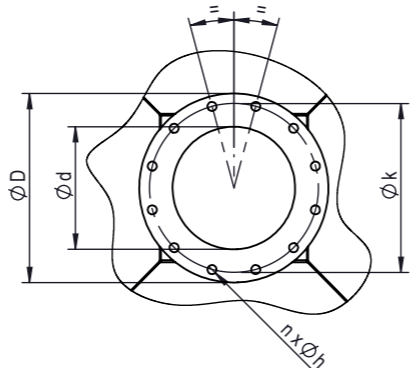
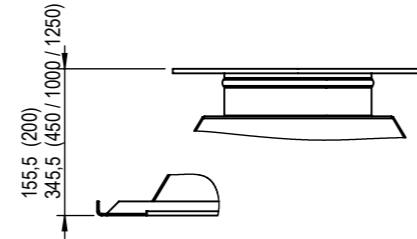


T/B-COLLECTOR SPIGOT DN250 - 450/3P6  
(14.26 kg)

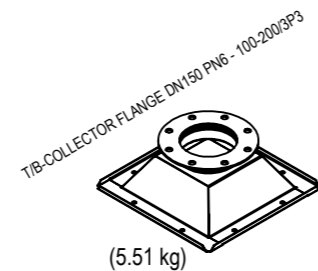


T/B-COLLECTOR SPIGOT DN350 - 1000/6P6  
(14.64 kg)

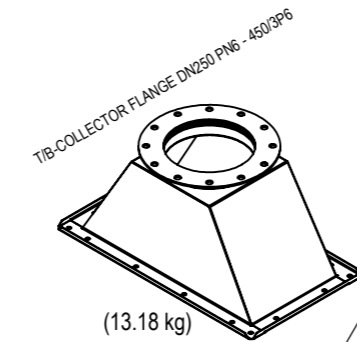
T/B COLLECTOR DN FLANGE



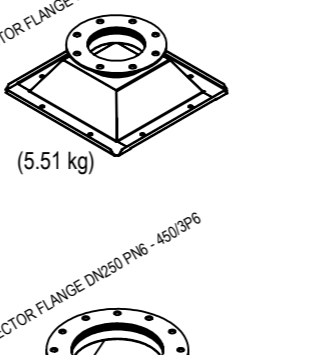
PROJECTION ACC TO:	φ SPIGOT	φ D	φ d	φ k	n	φ h
DN150 PN6	160	265	153	225	8	18
DN250 PN6	250	375	243	335	12	18
DN300 PN6	315	440	308	395	12	22
DN350 PN6	350	490	348	445	12	22
DN400 PN10	400	565	393	515	16	24



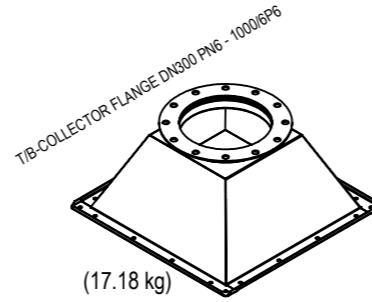
T/B-COLLECTOR FLANGE DN150 PN6 - 100-200/3P3  
(5.51 kg)



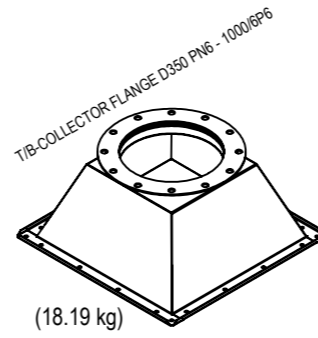
T/B-COLLECTOR FLANGE DN250 PN6 - 450/3P6  
(13.18 kg)



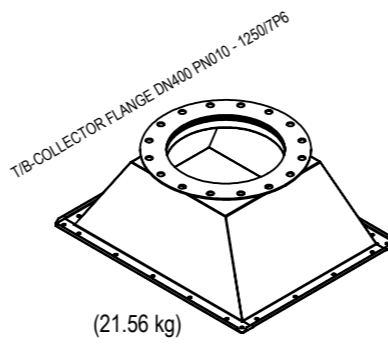
T/B-COLLECTOR FLANGE DN400 PN10 - 1250/7P6  
(21.56 kg)



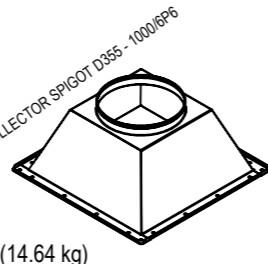
T/B-COLLECTOR FLANGE DN300 PN6 - 1000/6P6  
(17.18 kg)



T/B-COLLECTOR FLANGE DN350 PN6 - 1000/6P6  
(18.19 kg)



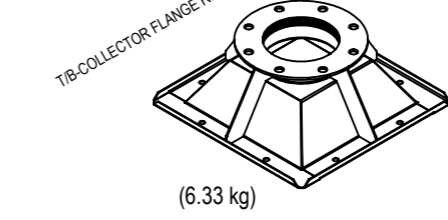
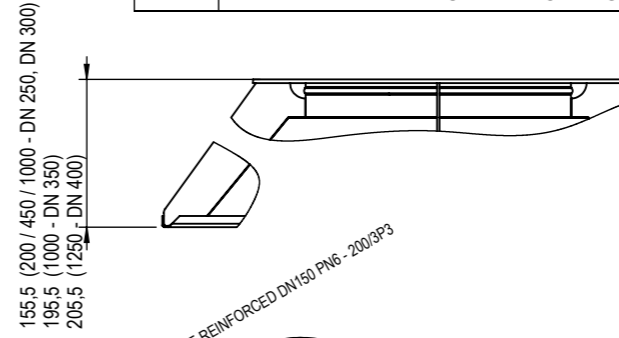
T/B-COLLECTOR FLANGE DN400 PN10 - 1250/7P6  
(21.56 kg)



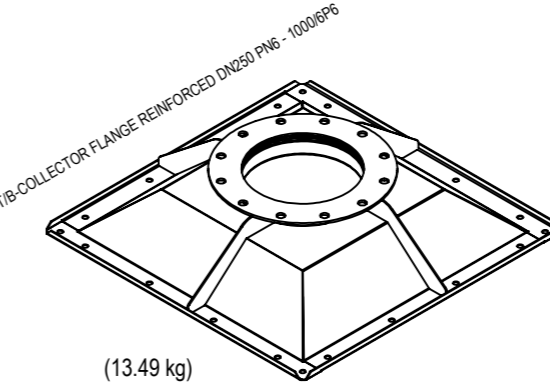
T/B-COLLECTOR FLANGE DN250 PN6 - 450/3P6  
(13.18 kg)

REV.	CHANGE	DATE	DESIGNED	APPROVED
I	ITEM NUMBERS CHANGED	20.08.2021	RIL	VPA

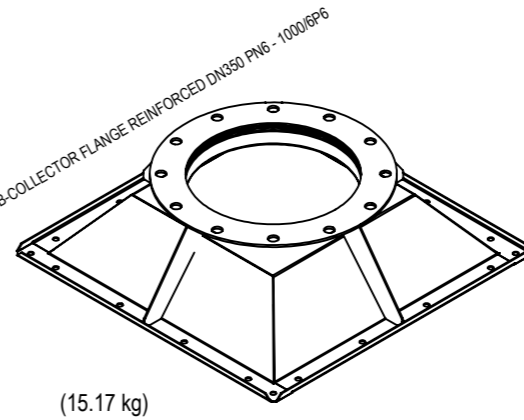
T/B COLLECTOR DN FLANGE REINFORCED



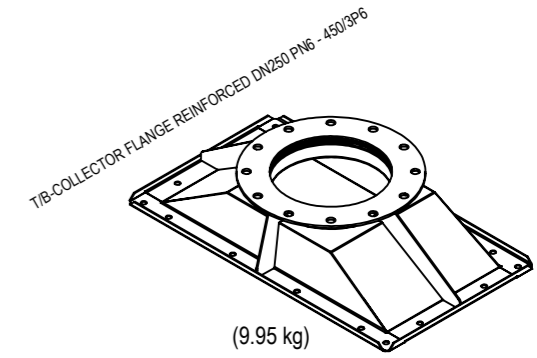
T/B-COLLECTOR FLANGE REINFORCED DN150 PN6 - 200/3P3  
(6.33 kg)



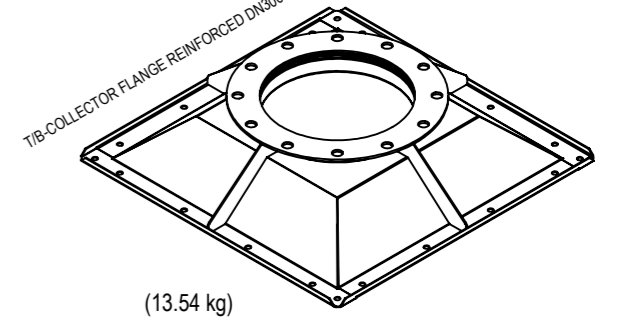
T/B-COLLECTOR FLANGE REINFORCED DN250 PN6 - 1000/6P6  
(13.49 kg)



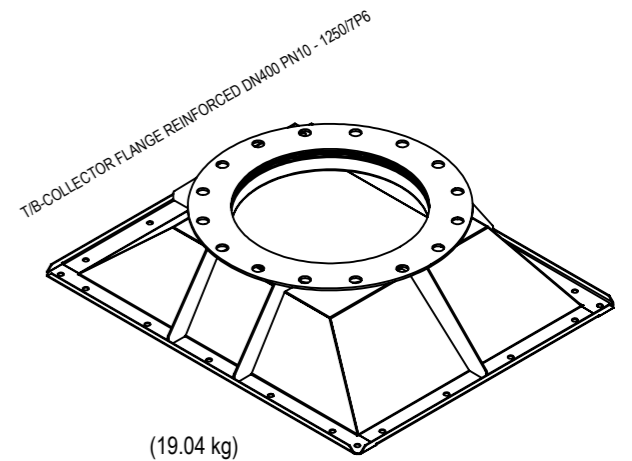
T/B-COLLECTOR FLANGE REINFORCED DN350 PN6 - 1000/6P6  
(15.17 kg)



T/B-COLLECTOR FLANGE REINFORCED DN250 PN6 - 450/3P6  
(9.95 kg)



T/B-COLLECTOR FLANGE REINFORCED DN300 PN6 - 1000/6P6  
(13.54 kg)



T/B-COLLECTOR FLANGE REINFORCED DN400 PN10 - 1250/7P6  
(19.04 kg)

CAMSAFE COLLECTOR																		
TOP / BOTTOM COLLECTOR SPIGOT																		
Version	200/3P3 SPIGOT Ø160			450/3P6 SPIGOT Ø250			1000/6P6 SPIGOT Ø315			1000/6P6 SPIGOT Ø355			1250/7P6 SPIGOT Ø400					
Size	200/3P3 SPIGOT Ø160			450/3P6 SPIGOT Ø250			1000/6P6 SPIGOT Ø315			1000/6P6 SPIGOT Ø355			1250/7P6 SPIGOT Ø400					
Drawing	5249-1150-810			5349-1150-810			5349-1100-810			5349-1100-801			5369-1100-810					
Material / Finish	Painted *	316L *	304L *	Painted *	316L *	304L *	Painted *	316L *	304L *	Painted *	316L *	304L *	Painted *	316L *	304L *			
Item No.	1072668	1072670	1072669	1068216	1072672	1072671	1072673	1072675	1072674	1072676	1072678	1072677	1072734	1072736	1072735	1072679	1072681	1072680
TOP / BOTTOM COLLECTOR DN FLANGE																		
Version	200/3P6 FLANGE DN150 PN6			450/3P6 FLANGE DN250 PN6			1000/6P6 FLANGE DN300 PN6			1000/6P6 FLANGE DN350 PN6			1250/7P6 FLANGE DN400 PN10					
Size	200/3P6 FLANGE DN150 PN6			450/3P6 FLANGE DN250 PN6			1000/6P6 FLANGE DN300 PN6			1000/6P6 FLANGE DN350 PN6			1250/7P6 FLANGE DN400 PN10					
Drawing	5249-1150-830			5349-1150-830			5349-1100-830			5349-1100-821			5369-1100-830					
Material / Finish	Painted *	316L *	304L *	Painted *	316L *	304L *	Painted *	316L *	304L *	Painted *	316L *	304L *	Painted *	316L *	304L *			
Item No.	1072682	1072684	1072683	1072685	1072687	1072686	1072688	1072690	1072689	1072691	1072693	1072692	1072737	1072738	1072739	1072694	1072696	1072695
TOP / BOTTOM COLLECTOR DN FLANGE REINFORCED																		
Version	200/3P6 FLANGE DN150 PN6			450/3P6 FLANGE DN250 PN6			1000/6P6 FLANGE DN250 PN6			1000/6P6 FLANGE DN350 PN6			1250/7P6 FLANGE DN400 PN10					
Size	200/3P6 FLANGE DN150 PN6			450/3P6 FLANGE DN250 PN6			1000/6P6 FLANGE DN250 PN6			1000/6P6 FLANGE DN350 PN6			1250/7P6 FLANGE DN400 PN10					
Drawing	5249-1150-870			5349-1150-880			5349-1100-870			5349-1100-880			5369-1100-870					
Material / Finish	Painted *	316L *	304L *	Painted *	316L *	304L *	Painted *	316L *	304L *	Painted *	316L *	304L *	Painted *	316L *	304L *			
Item No.	1072799	1072801	1072800	1072802	1072804	1072803	1072805	1072807	1072806	1072808	1072810	1072809	1072811	1072813	1072812	1072814	1072816	1072815
Material	Painted *						316L *						304L *					
Finish	SHEETMETAL - EN10025-2 - S235JR(G2) (1.0038)						SHEETMETAL 316L - EN10088-2 - X2CrNiMo17-12-2 (1.4404)						SHEETMETAL 304L - EN10088 - X2CrNi18-09 (1.4307)					
	Painted RAL 9010 SPEC025						Pickled & Glass Blasted SPEC026						Pickled & Glass Blasted SPEC026					

General tolerances ISO 2768 - vL unless otherwise specified	
DIMENSION	TOLERANCE
< 30	± 1
> 30 to 120	± 1,5
> 120 to 400	± 2,5
> 400 to 1000	± 4
> 1000 to 4000	± 6
> 4000	± 8
Break sharp angles 0,5 to 2	



DESCRIPTION			
CamSafe 2 STD COLLECTOR SCOPE TOP/BOTTOM COLLECTORS			
PROJECT	LAST REVISION	WEIGHT	SCALE
-	20.08.2021	see drawing	1:20
DRAWING REF.	SHEET	SIZE	SCALE
5349-0000-107 rev.I	8/8	A3	1:20

NB: The copyright of this drawing remains with Camfil. Contents must not be used, copied or disclosed to third parties without prior written consent. All rights reserved.